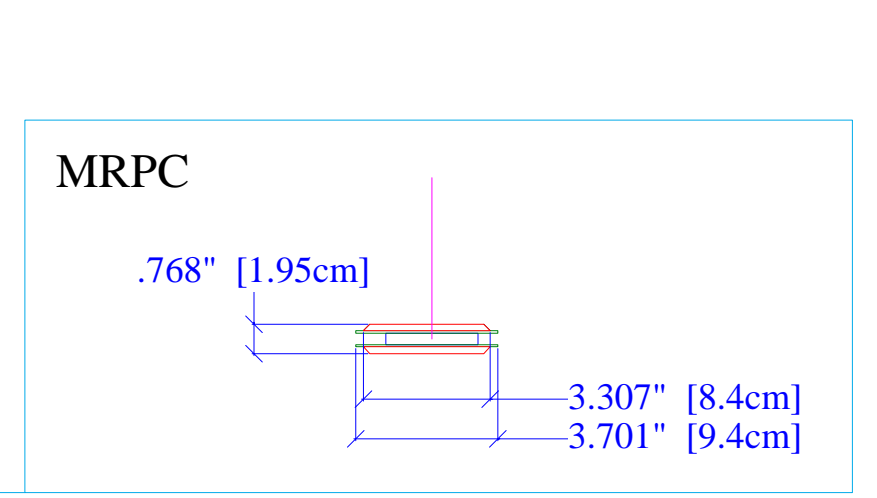
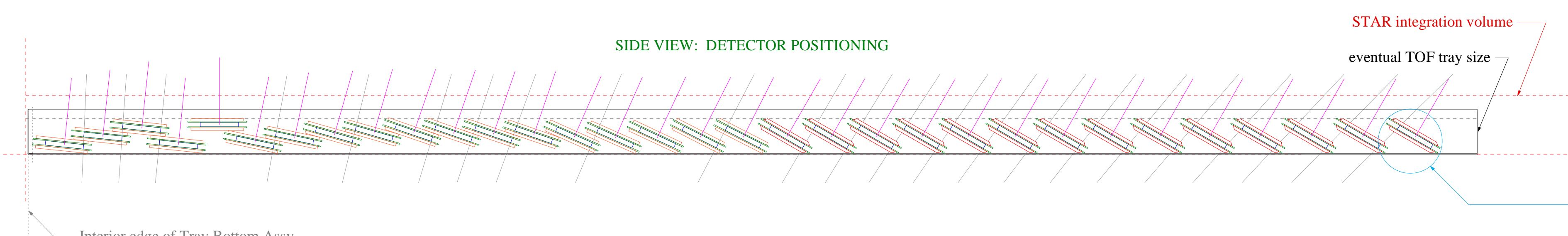
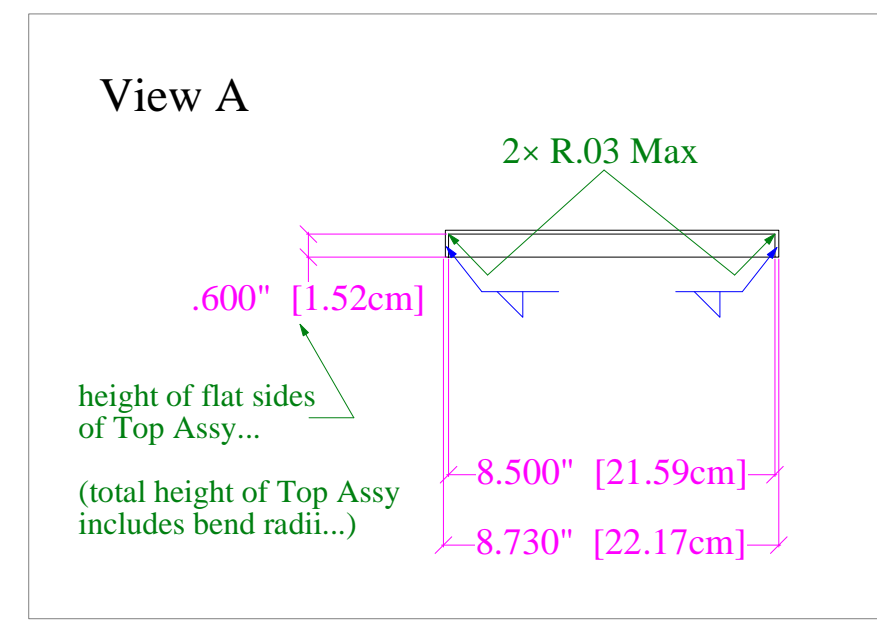
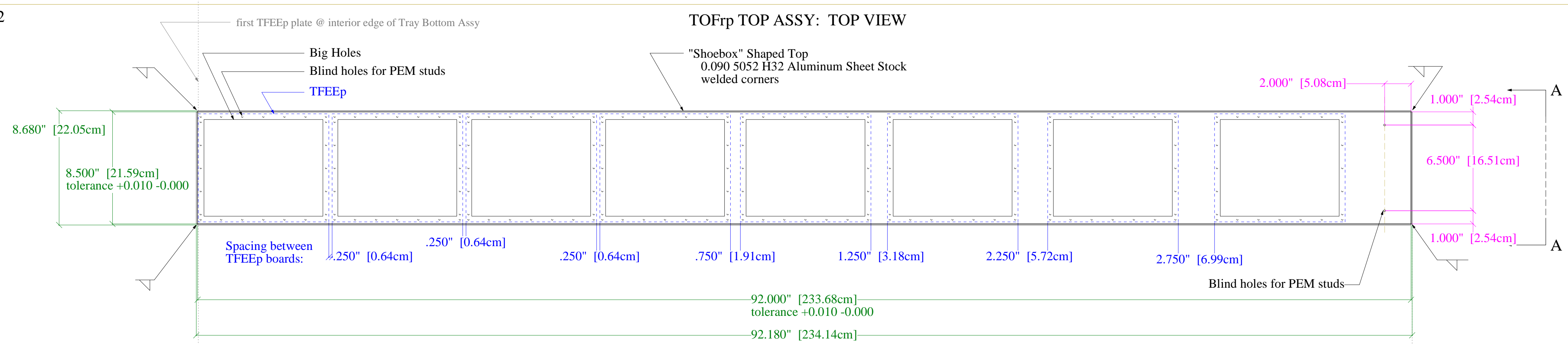


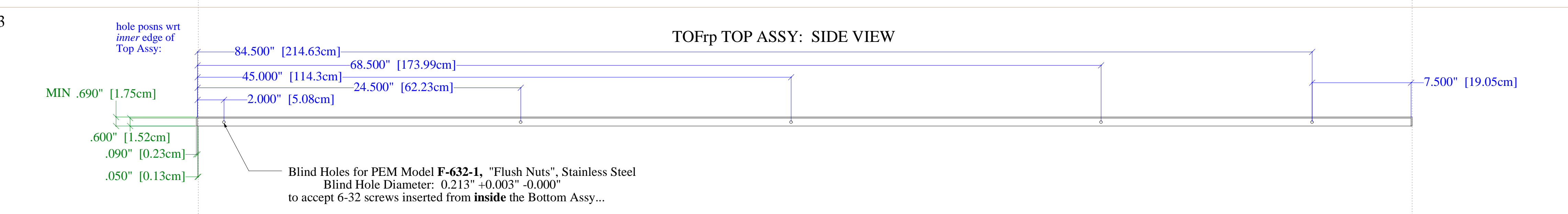
View 1



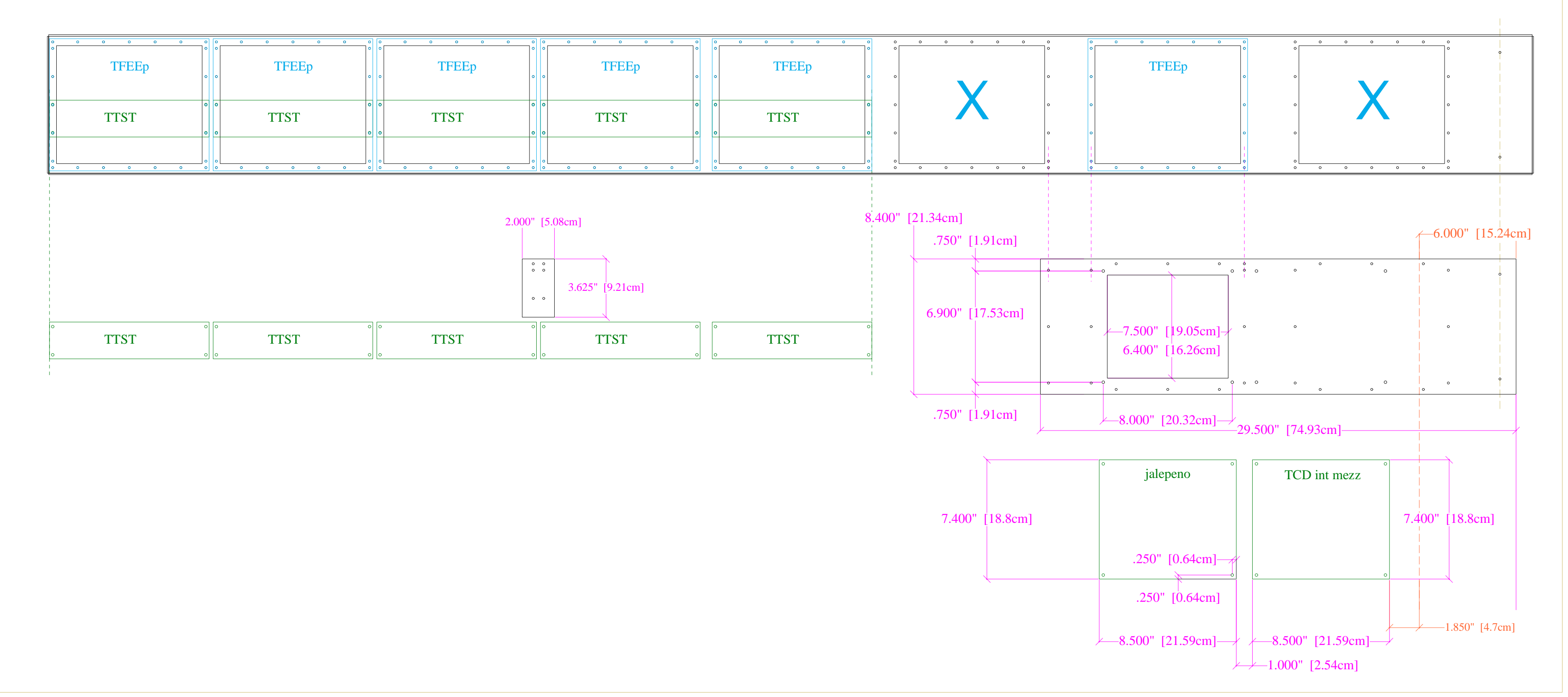
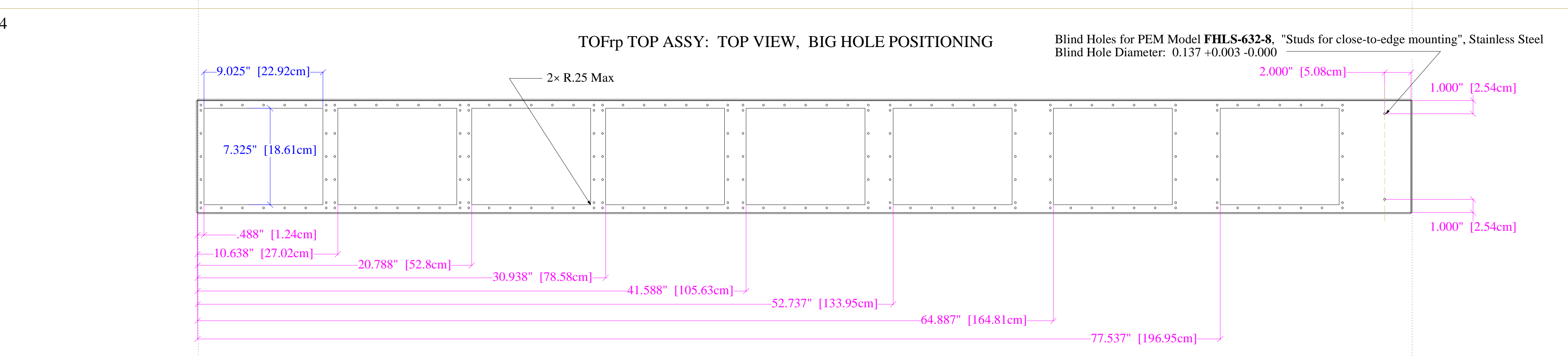
View 2



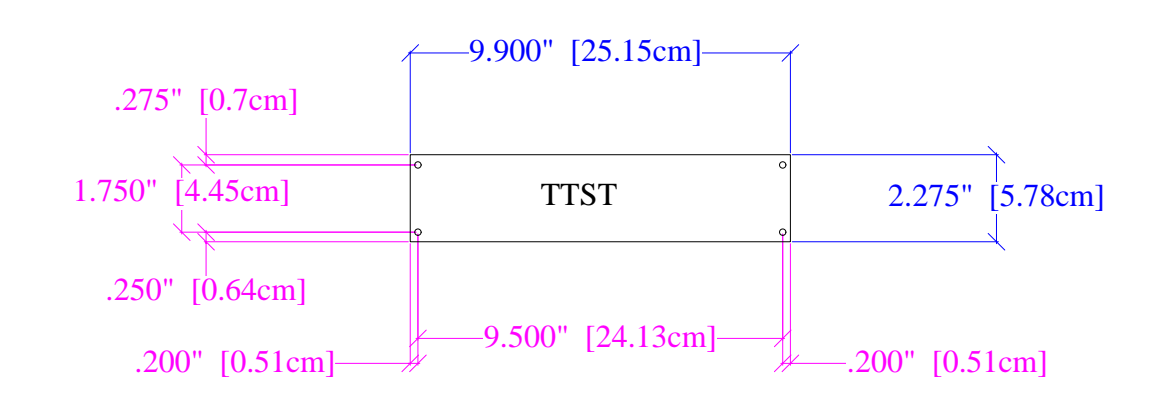
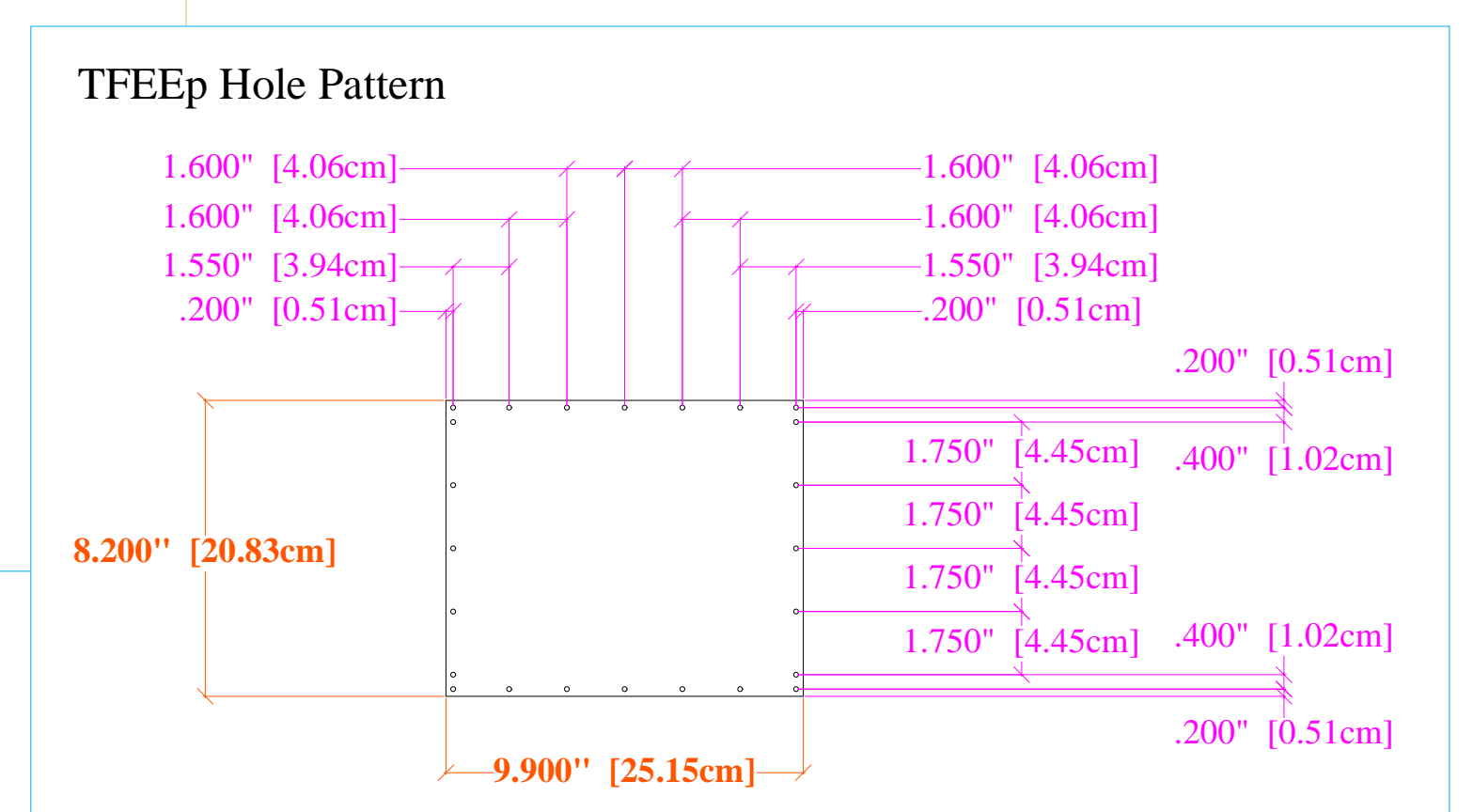
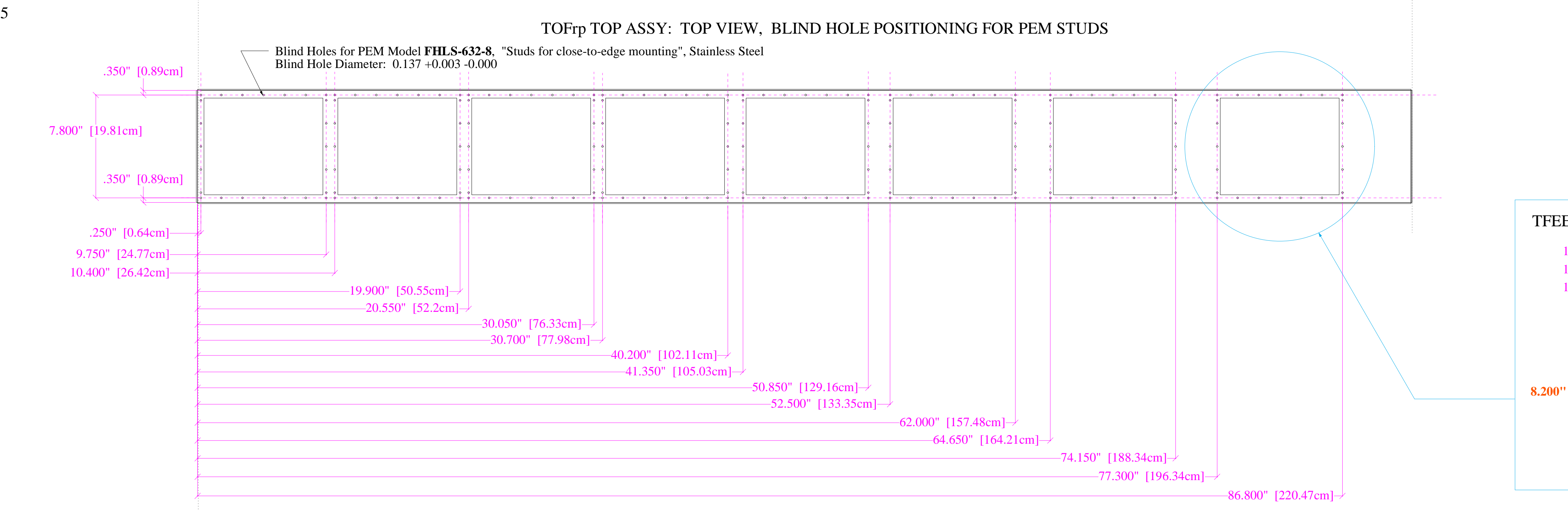
View 3



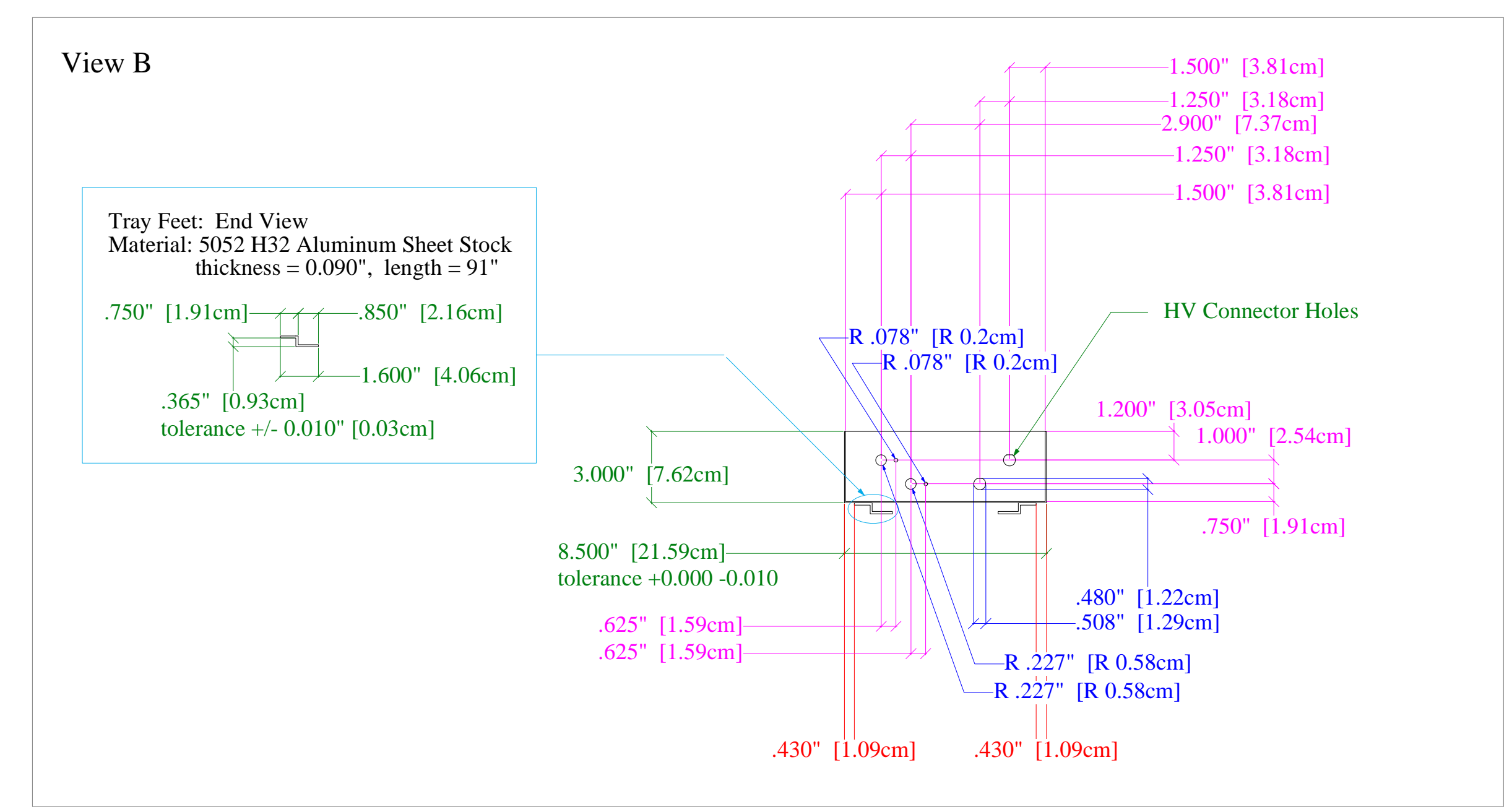
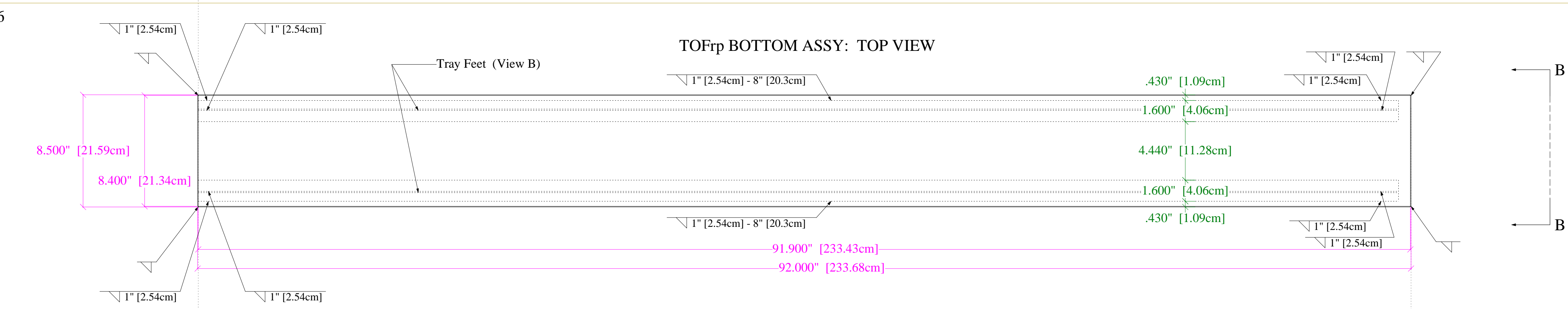
View 4



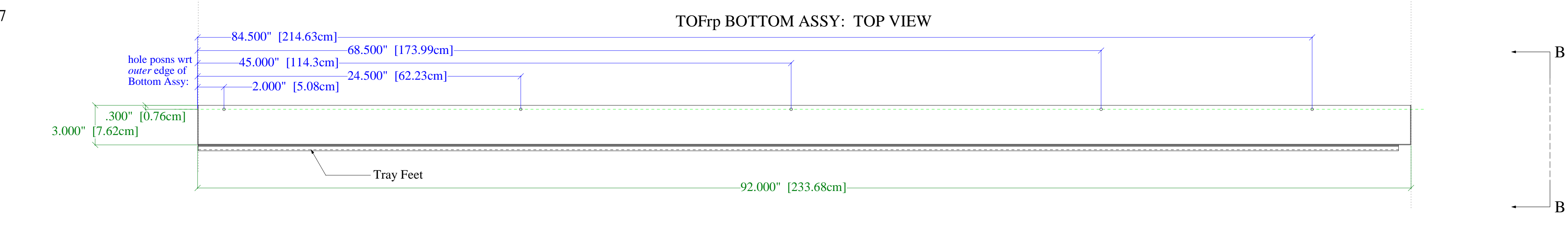
View 5



View 6



View 7



STAR TOFRp Tray

Drawing History:
 TOFRp001-E-1 Sept 02, 2003
 TOFRp001-E-2 Sept 04, 2003
 Revision 1: (View B) changed 2 "gas holes" to fit Swagelok SS-400-61CP w/ retainer SS-402-61F.
 Revision 2: (View 3) added 4 adf1 blind holes - PEM nuts to Top Assy
 Revision 3: (View 7) added 4 adf1 blind holes to Bottom Assy
 Revision 4: (View 2 & 4) added 2 PEM Studs in Top Assy, near feedthrough side, for cable strain relief

Drawn By: W. J. Llope
 Llope@physics.rice.edu
 713-348-4741

Parts:

- One (1) Tray Top Assy (Views 2, 3, 4, & 5)
 0.090" 5052 H32 Aluminum Sheet Stock
- One (1) Tray Bottom Assy (Views 6 & 7)
 0.050" 5052 H32 Aluminum Sheet Stock
- Two (2) Tray Feet (Views 6 & B)
 0.090" 5052 H32 Aluminum Sheet Stock
 welded to Bottom Assy as in View B.

Notes:

- Parts are to be degreased and wrapped in plastic.
- PEM nuts and studs to be cleaned before mounting in Top Assy.
- Top Assy must fit onto Bottom Assy smoothly & without force.